

The ArtRage for iPad 2.0 Quick Start Guide

ArtRage for iPad 2.0 includes a built in guide introducing the basic features, and demonstrating the most important tools and menus.



Performing first time initialisation:

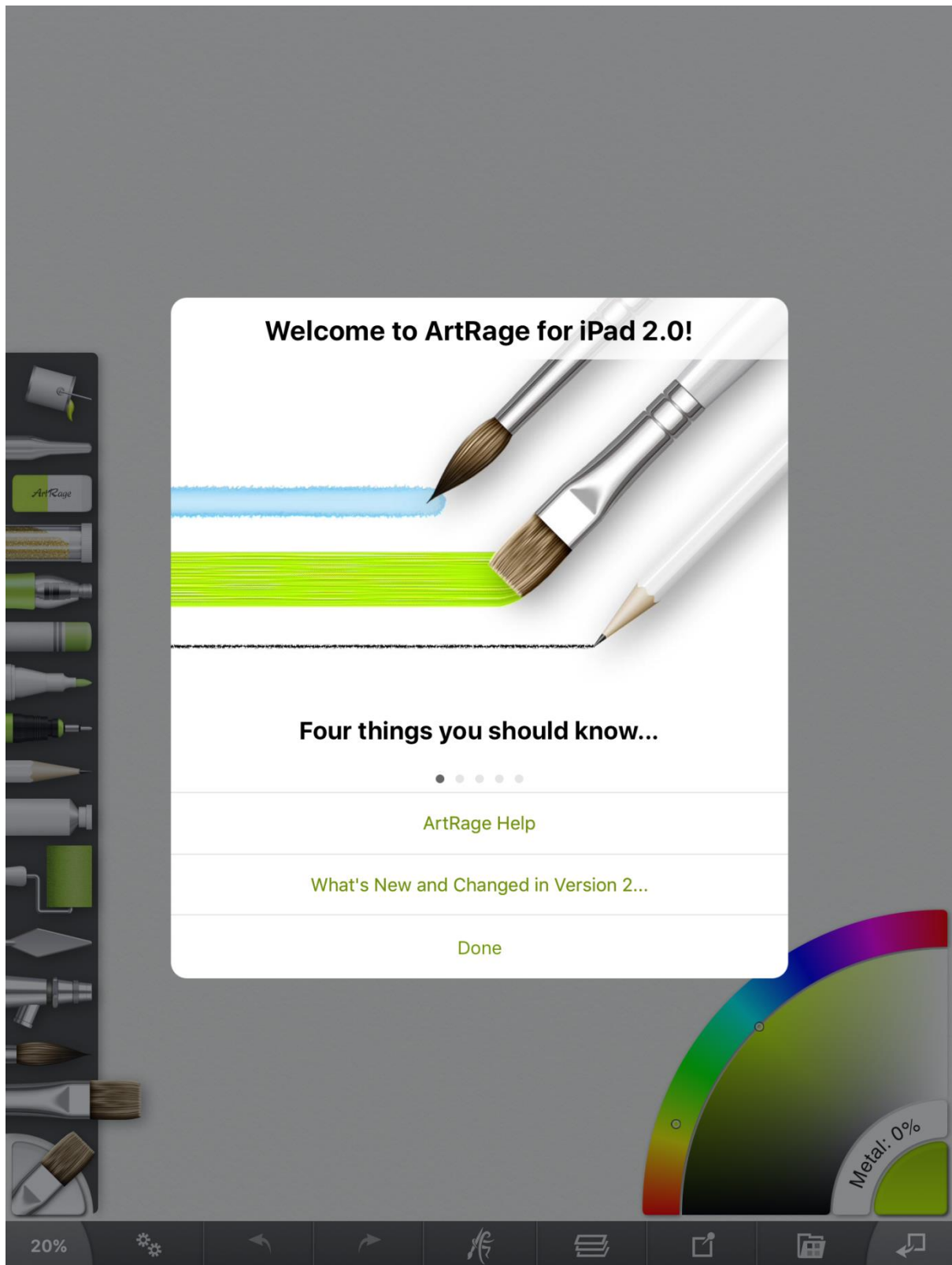
Installing Canvas Grains...



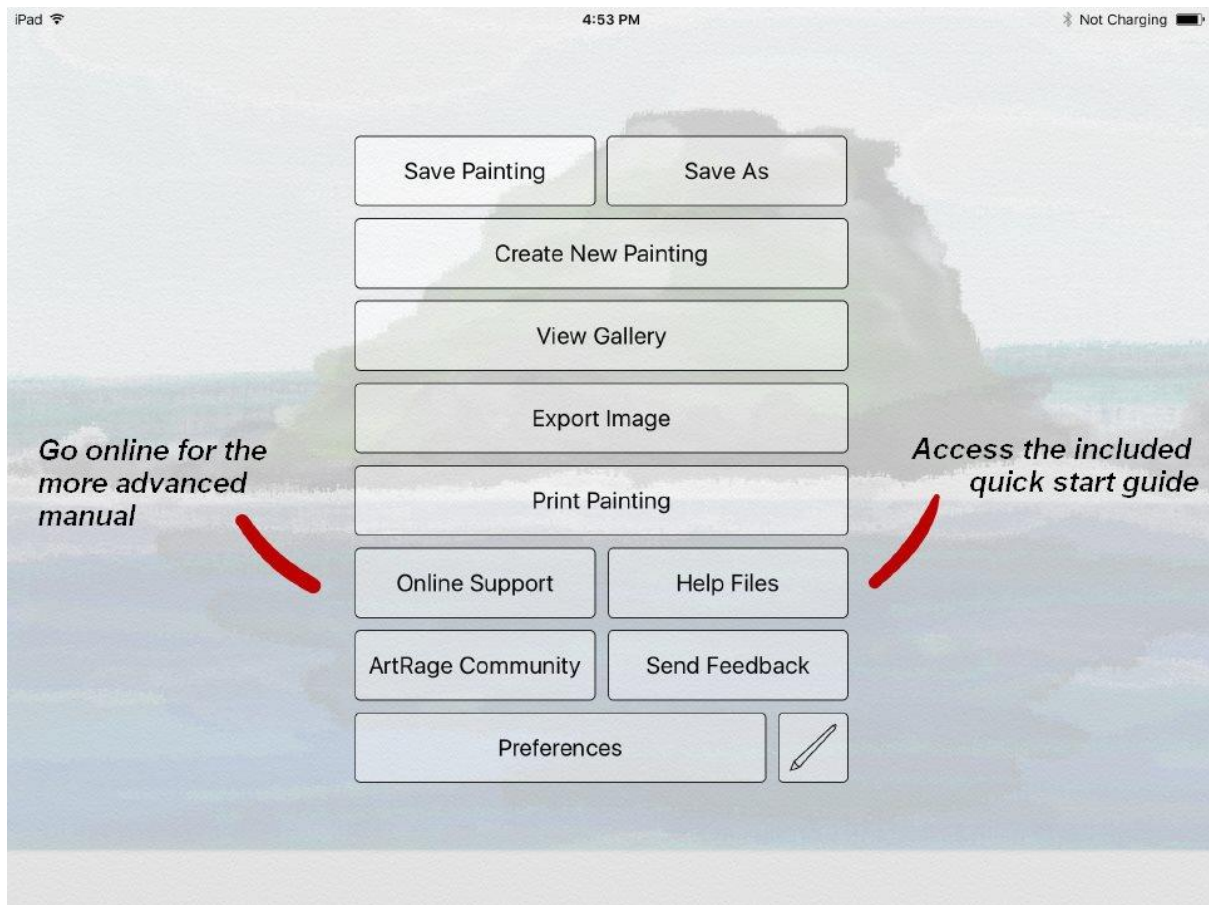
ArtRage for iPad v2.0

Welcome to ArtRage for iPad 2.0

New users will be presented with a pop up inviting them to check out the quick start guide, changes to 2.0, and important sections of the help pages.

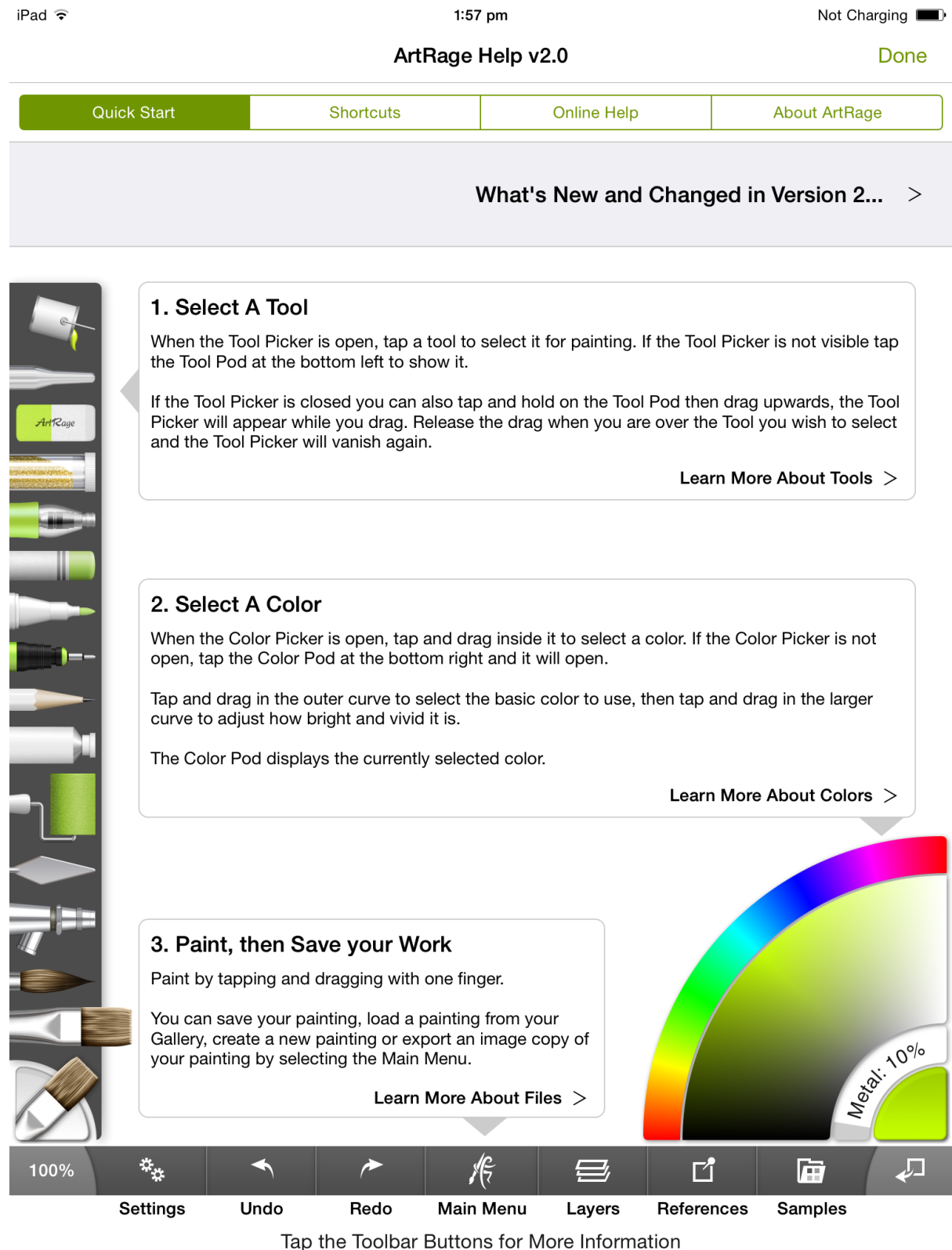


The welcome pop-up won't show up again, but the help pages can be easily accessed through the menu.

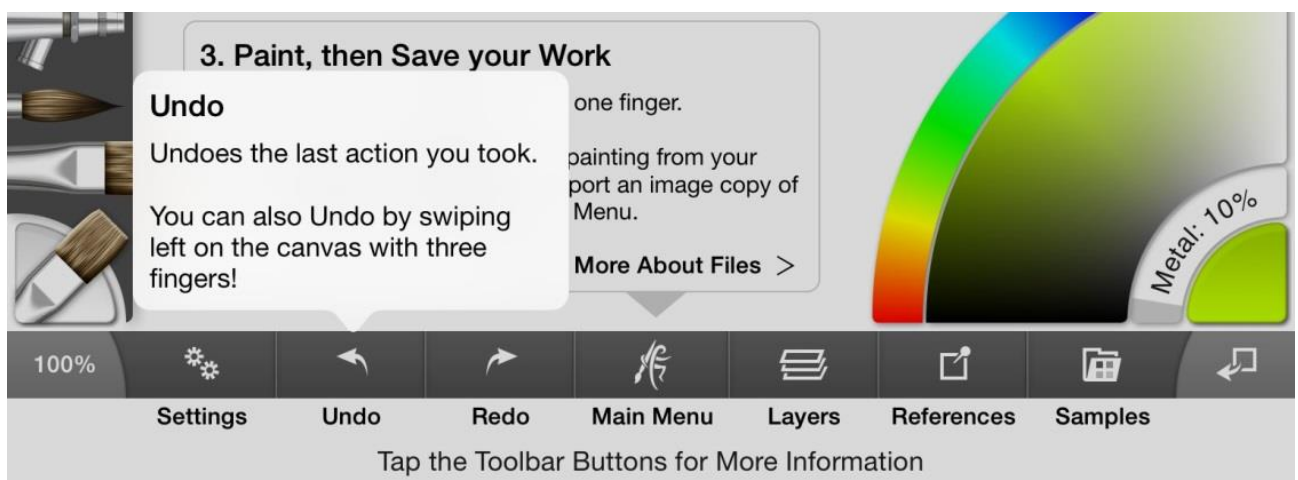
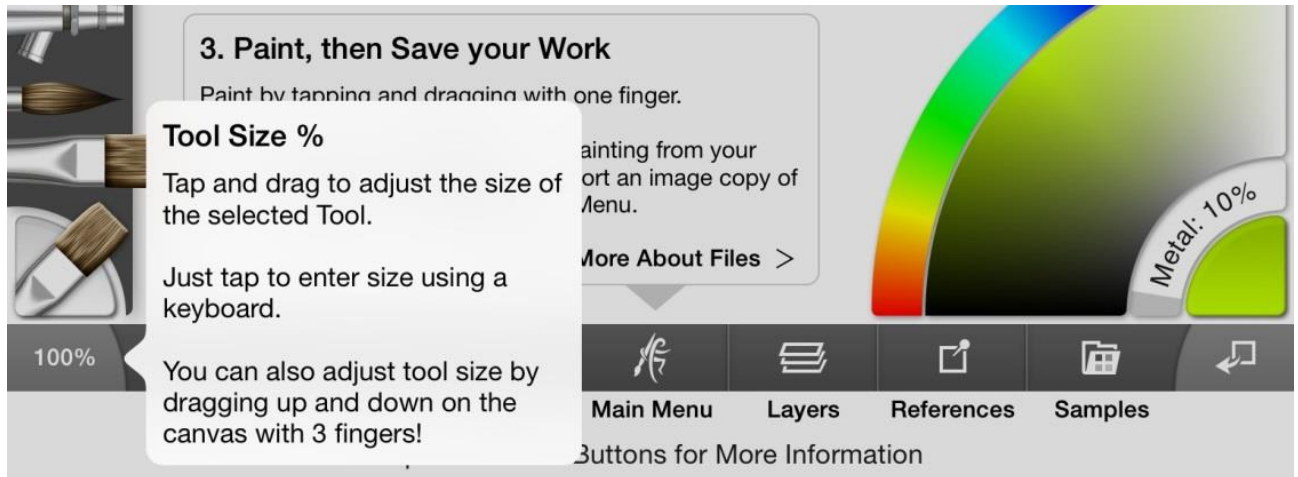


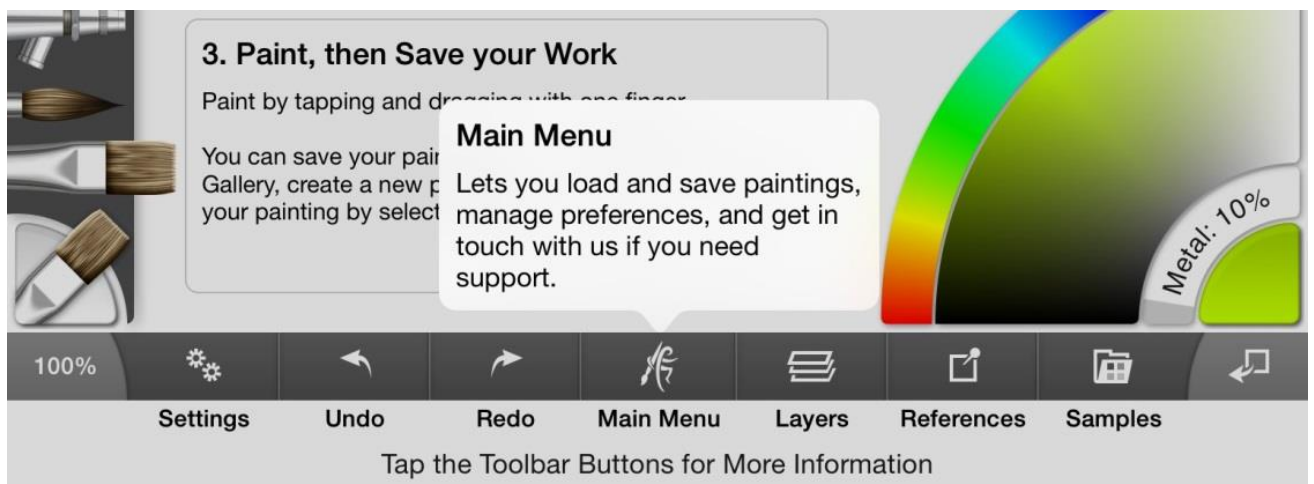
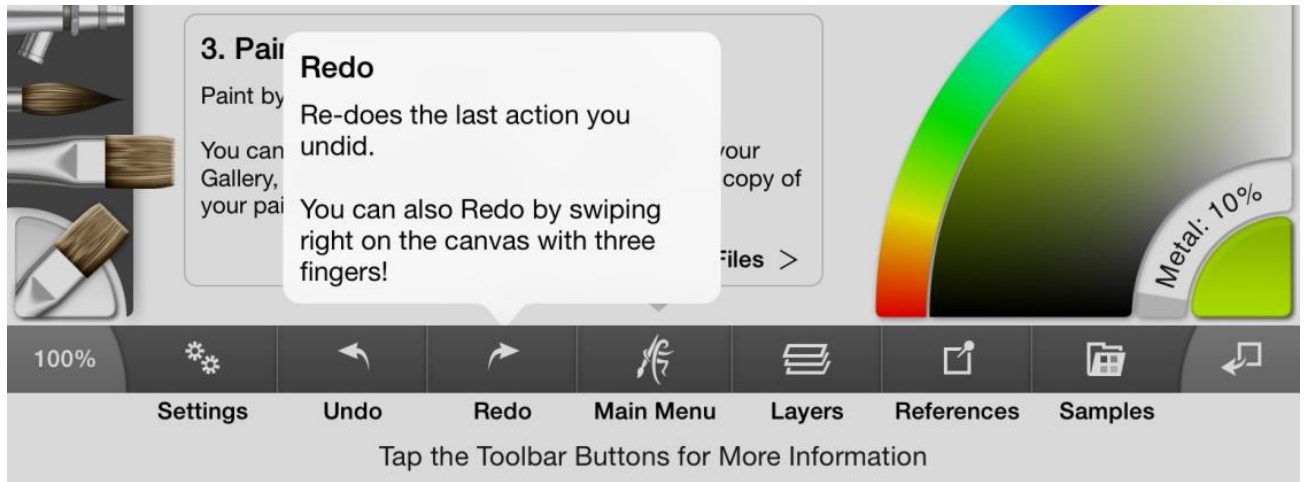
For more advanced help, users can access the online manuals at <https://www.artrage.com/manuals/artrage-mobile-editions/artrage-ipad/>

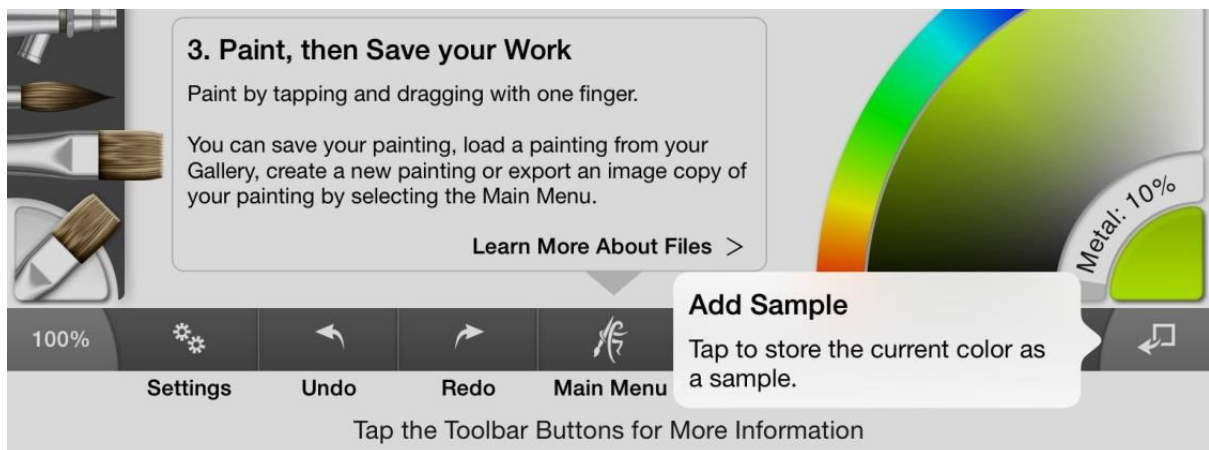
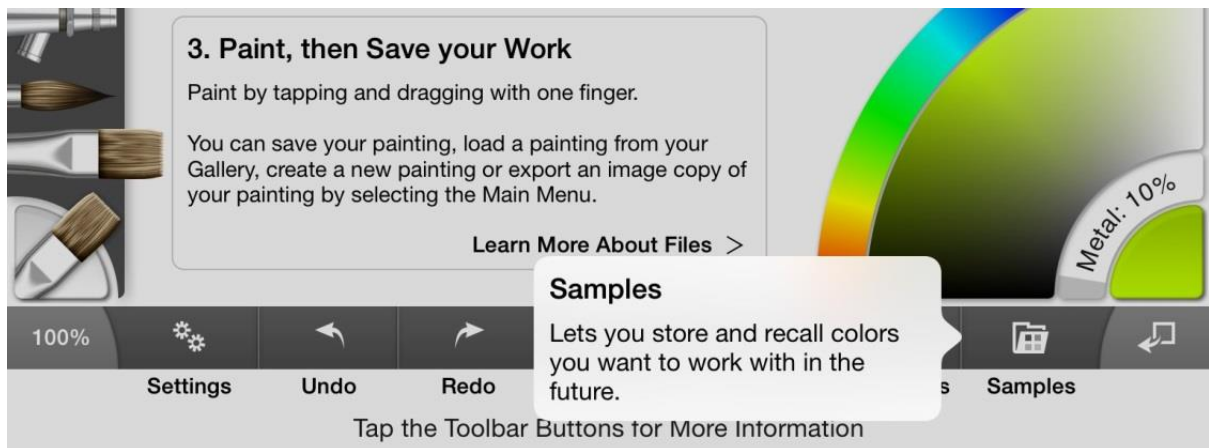
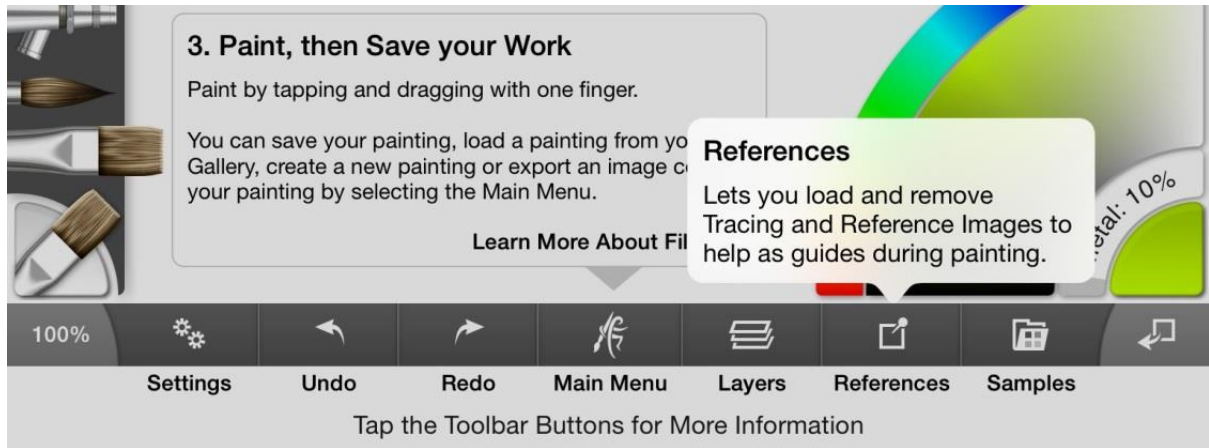
The Quick Start guide is interactive, and lets users tap around and explore the interface. It also links users to more in-depth manuals to allow them explore features in greater depth.



Interactive UI: Tap around to learn about the menu bar!







Shortcuts

ArtRage for iPad 2.0 still includes full support for multitouch gestures, allowing users to comfortably and quickly interact with the app.

iPad

6:25 pm

Not Charging

ArtRage Help v2.0

Done

Quick Start

Shortcuts

Online Help

About ArtRage

1 Finger:

Tap and hold to sample color from the Canvas.



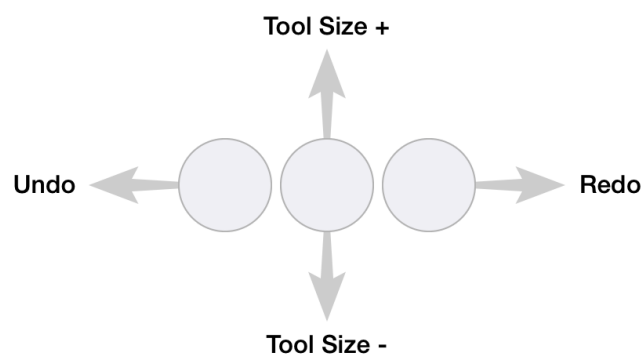
Note: To do this, turn on Tap and Hold to Sample Color in Preferences.

2 Fingers:



Tap with 2 fingers on the Canvas to reset zoom.

3 Fingers:



Drag 3 fingers on the Canvas for the shortcuts above.




Tap with 3 fingers on the Canvas to show or hide the Toolbar.

Online Help

Users can go directly to relevant sections of the online manual, find our online communities and contact Ambient Design with problems or feedback.

iPad 

6:25 pm

Not Charging 

ArtRage Help v2.0

Done

Quick Start

Shortcuts

Online Help

About ArtRage

Online Help Topics:

Tools: Types, Settings, and Presets.

Colors: Selecting and Saving.

Files: Load, Save, and Share.

Layers: Using and managing Layers.

References: Using Reference and Tracing Images

ArtRage Online Resources:

ArtRage Community

Online Support

ArtRage on Facebook

About ArtRage

And finally, the Ambient Design team!

iPad

4:49 pm

Not Charging

ArtRage Help v2.0

Done

Quick Start

Shortcuts

Online Help

About ArtRage



ArtRage for iPad Team

Andy Bearsley, Tool & Backbone Code

Matt Fox-Wilson, UI Design & Code

Jim Williams, File Sharing Code

David Jenner, QA & Developer Support

Uwe Maurer, Business Development

Athena Kekenos, Tool & App Iconography

Additional Thanks To:

Ambient Team: Miriam Schneider, Hannah Starrett Wright, Michael Blythe

Tycho, Ambient Mascot (2000 - 2015)

ArtRage and the ArtRage Brush Man logo are registered trademarks of Ambient Design Ltd.